

# SP-2210KD-MG

电子激光开袋机  
Semi-auto laser pocket welting machine



## 性能优势

方式简单，对操作者无技能要求；  
气动方式压眉，袋眉不偏移，解放双手，效率倍增独特的夹持装置，适应更多的工艺及款式需求；  
激光剪切，刀口整齐不起毛，不散丝，尤其对水洗裤效果更佳轻松的自诊检测方式，快速直接呈现故障现象。

## 效率

正常西裤后袋:200个/小时  
正常西裤拉链袋:180个/小时

## 适用范围

主要应用于缝制西裤、休闲裤工艺眉/拉链口袋

## Advantages

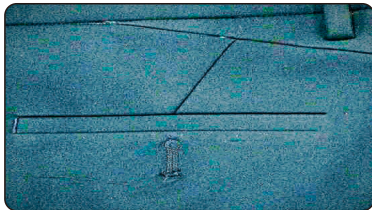
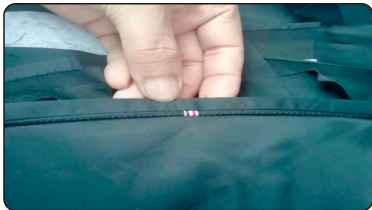
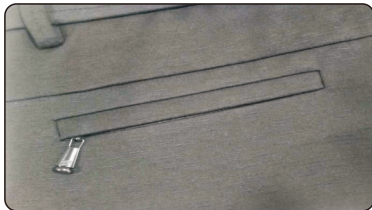
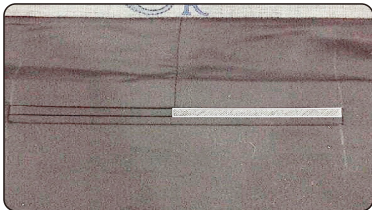
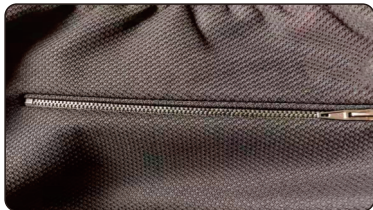
The method is simple, and there is no skill requirement for the operator;  
Pneumatic way to press the eyebrows, the bag eyebrows do not shift, free hands, double the efficiency. The unique clamping device is suitable for more process and style requirements;  
Laser cutting, the knife edge is neat and lint-free, no loose threads, especially for washing pants. It is a more easy self-diagnosis and detection method, which can quickly and directly show the fault phenomenon.

## Efficiency

Normal trousers back pocket: 200/hour  
Normal trousers zipper bag: 180 pcs/hour

## Application

Mainly used in sewing trousers, casual pants craft eyebrow / zipper pocket



视频及资料下载  
Video and data download

最高缝纫速度Highest sewing speed	2700rpm	气压Air pressure	1.8L/min
缝制范围Sewing range	220x100mm	袋口长度Pocket opening length	50-180mm
针距Stitch length	0.05-12.7mm	袋口宽度Pocket opening width	8-20mm

以上基础参数表为标准款机型