

SP-L3020-5CK / SP-L4530-5CK

冲孔机（五工位）

Punching machine(5 position)



性能优势

机械式冲孔，皮料不黑不臭；
专利产品，自主研发的数控系统，升级更方便；
AutoCAD制图；
高产高效，1000~1200孔/分钟；
2度电/小时，超低用电量；
废料通过特别装置同步回收；
伺服系统精度0.015，噪音低于70分贝。

效率

伺服系统，冲孔精度可达0.015，性能稳定且高效率。

适用范围

主要用于鞋、箱包及皮革，真皮料冲孔，不黑不臭，全程自动化操作，单组五冲头，可按要求同步冲不同规格，不同形状的孔形，材料厚度可冲1-6mm原料。

Advantages

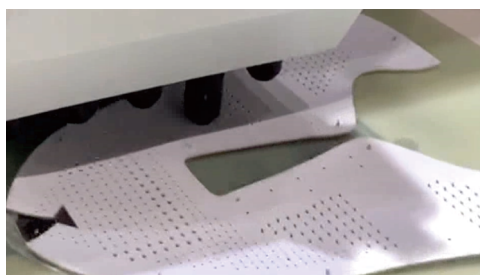
Mechanical punching, the leather is neither black nor smelly;
Patented products, self-developed CNC system, easy to upgrade;
High yield and high efficiency, 1000~1200 holes/min;
2 kWh/hour, ultra-low power consumption;
Waste materials are recovered synchronously through a special device;
The accuracy of the servo system is 0.015, and the noise is less than 70 decibels.

Efficiency

Servo system, punching accuracy can reach 0.015, stable performance and high efficiency.

Application

Mainly used for punching shoes, bags and leather, leather materials, not black and smelly, full automatic operation, single group of five punches, can punch different specifications and different shapes of holes according to requirements, and the thickness of the material can be punched 1-6mm raw material.



视频及资料下载
Video and data download

型号 Model	SP-L3020-5CK	SP-L4530-5CK	冲孔精度(mm)Accuracy	±0.15mm
冲孔速度 Holes/minute	1000 holes/min		设备公差(mm)Tolerance	±0.02mm
冲头数量 Punchers	5		气压 Air pressure	0.4~0.7Mpa
冲孔面积(mm) area	300x200 (380*200单孔single hole)	450x300 (530*300单孔single hole)	重量 Weight	SP-L3020-5CK:900Kg SP-L4530-5CK:1000Kg
孔径范围(mm) Diameter	0.8~10mm		外型尺寸 Dimensions	SP-L3020-5CK:1100x915x1390mm SP-L4530-5CK:1100x915x1390mm(LxWxH)
材料厚度(mm) Thickness	1~6mm		电压 Voltage	220V/2.5Kw

以上基础参数表为标准款机型